

Rotary



Rotary Club of Augusta

September 16, 2024  
Club Assembly

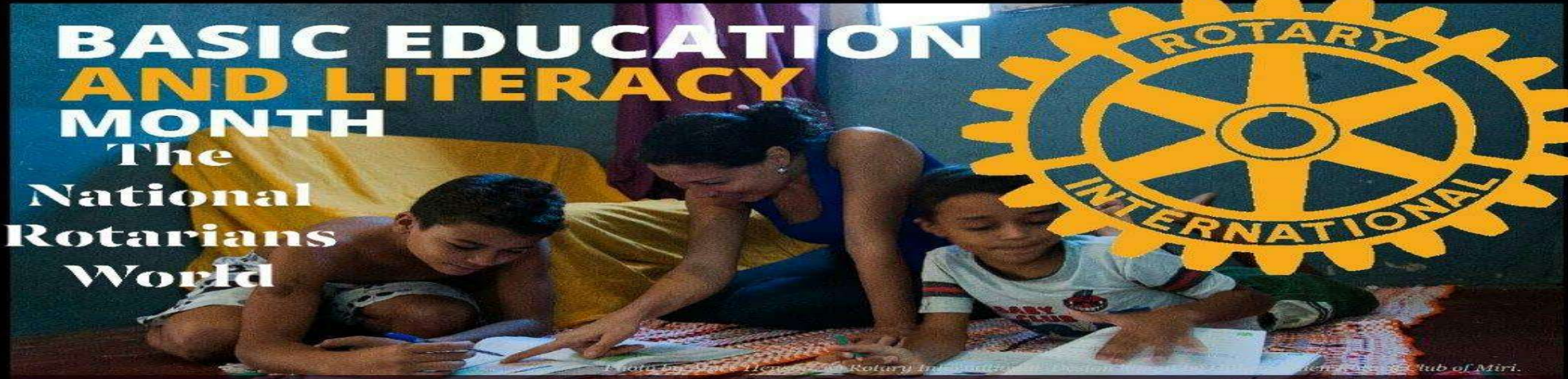


THE MAGIC  
OF ROTARY

# SEPTEMBER IS

## BASIC EDUCATION AND LITERACY MONTH

The  
National  
Rotarians  
World



“To read is to empower, to empower is to write, to write is to influence, to influence is to change, to change is to live.”

Jane Evershed

Rotary



TAKE ACTION: Get Involved, Be a People of Action

# PLEDGE AND INVOCATION

Presented: by Brittany Burnett



# THE SUNSHINE REPORT

---

Presented by:  
**William Keogh**



Rotary



Rotary Club of Augusta



4



*Member Anniversaries:*  
*Celebrating Years as a Rotarian*

George Williams Jr 13

Presented By :  
Sheri Osburn & Beverly King

# VISITORS AND GUESTS

---



# Rotary



# Today's Challengers

Rotary Club of Augusta

## INSIDE CART CHALLENGER

### SAMUEL D BEAIRD



SCAN ME!

Contribute to the blue buckets  
or online at [mycartfund.org](http://mycartfund.org)



## OUTSIDE CART CHALLENGER

**Rotary**



Rotary Club of Augusta



7

## **Program Speaker**

**Dr. Jorge Cortes, Director of the  
Georgia Cancer Center in Augusta, GA**





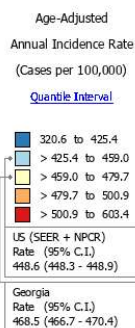
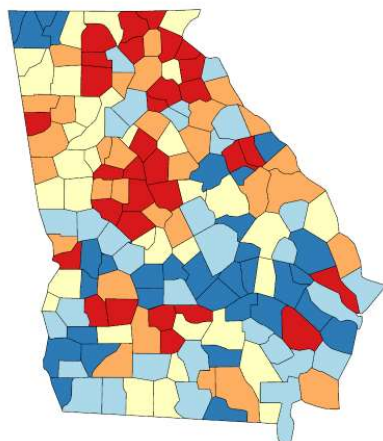
**Georgia Cancer Center**

# Cancer in Georgia – 2024 Statistics

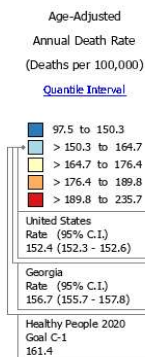
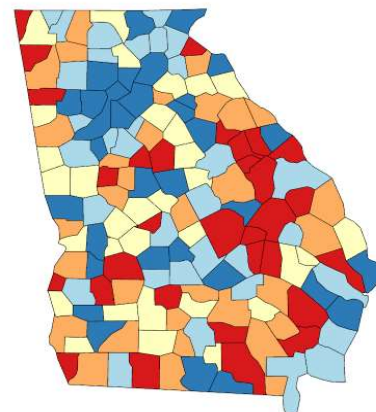
- **63,170 new cases** (3% increase from 2023)
- **18,740 deaths** (1% increase from 2023)
- **Incidence rate:** 463.8:100,000 population (age adjusted to the 2000 US standard population)
  - National average 442.3:100,000
  - 16<sup>th</sup> highest in the US
- **Death rate:** 153.4:100,000 population (age adjusted to the 2000 US standard population)
  - National average 149.4:100,000
  - 22<sup>nd</sup> highest in the US

# Cancer Incidence and Mortality Rates in Georgia by County 2014-2018

## Incidence Rates



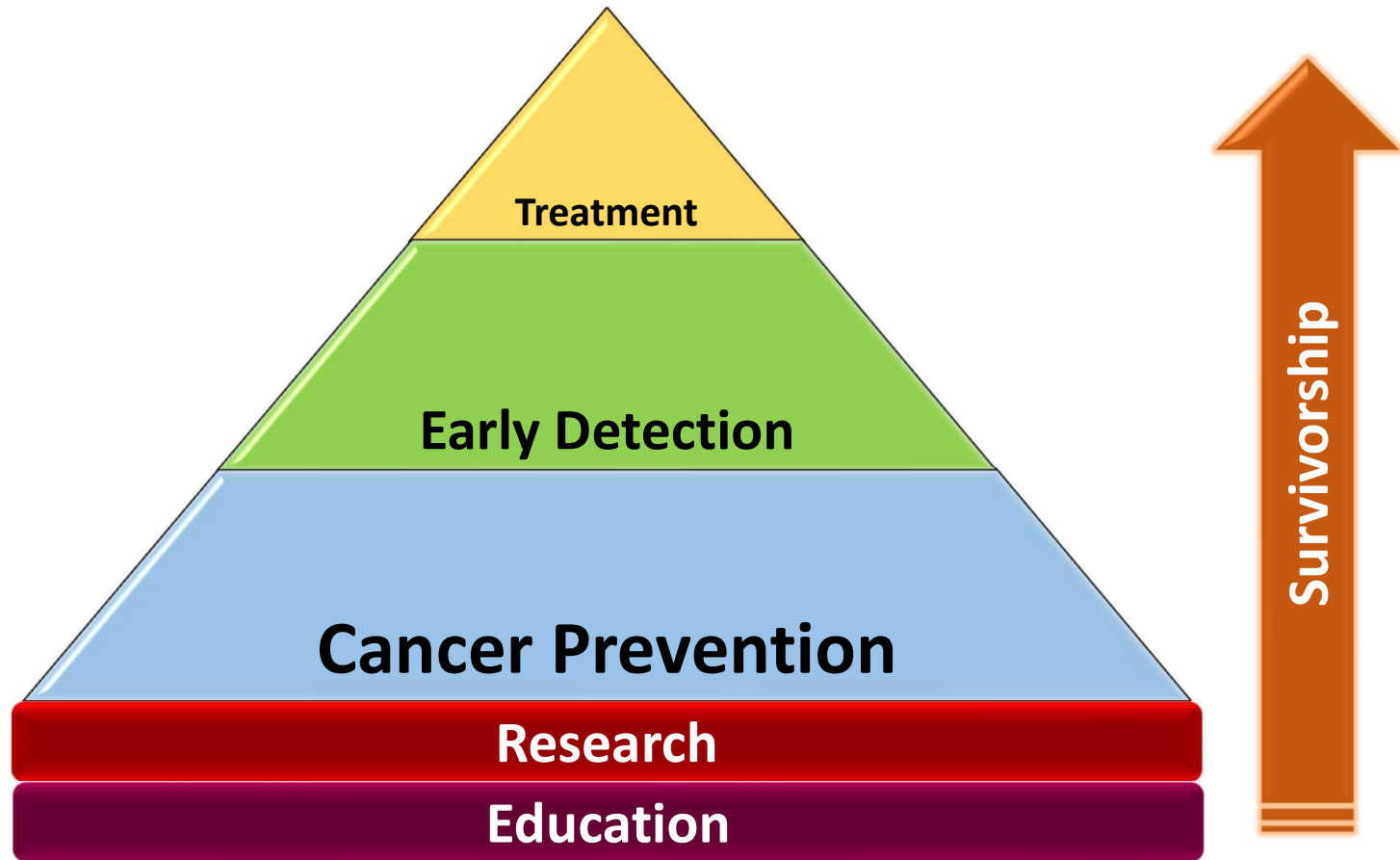
## Death Rates



**Notes:**  
[State Cancer Registries](#) may provide more current or more local data.  
 Data presented on the State Cancer Profiles Web Site may differ from statistics reported by the State Cancer Registries ([for more information](#)).  
 \* Incidence rates (cases per 100,000 population per year) are age-adjusted to the [2000 US standard population](#) (19 age groups: <1, 1-4, 5-9, ..., 80-84, 85+). Rates are for invasive cancer only (except for bladder which is invasive and in situ) or unless otherwise specified. Rates calculated using SEER\*Stat. Population counts for denominators are based on Census populations as modified by NCI.  
 The [1969-2018 US Population Data](#) File is used for SEER and NPCR incidence rates.  
 Rates are computed using cancers classified as malignant based on ICD-O-3. For more information see [malignant.html](#)  
 Data for the United States does not include data from Puerto Rico

**Notes:**  
[State Cancer Registries](#) may provide more current or more local data.  
 Data presented on the State Cancer Profiles Web Site may differ from statistics reported by the State Cancer Registries ([for more information](#)).  
 Source: Death data provided by the [National Vital Statistics System](#) public use data file. Death rates calculated by the National Cancer Institute using SEER\*Stat. Death rates (deaths per 100,000 population per year) are age-adjusted to the [2000 US standard population](#) (19 age groups: <1, 1-4, 5-9, ..., 80-84, 85+). The Healthy People 2020 goals are based on rates adjusted using different methods but the differences should be minimal. Population counts for denominators are based on the [Census 1969-2018 US Population Data](#) File as modified by NCI.  
 Healthy People 2020 Goal C-1: Reduce the overall cancer death rate to 161.4.  
 Healthy People 2020 Objectives provided by the [Centers for Disease Control and Prevention](#).  
 Data for the United States does not include data from Puerto Rico

# The Road to Improving Cancer Survival



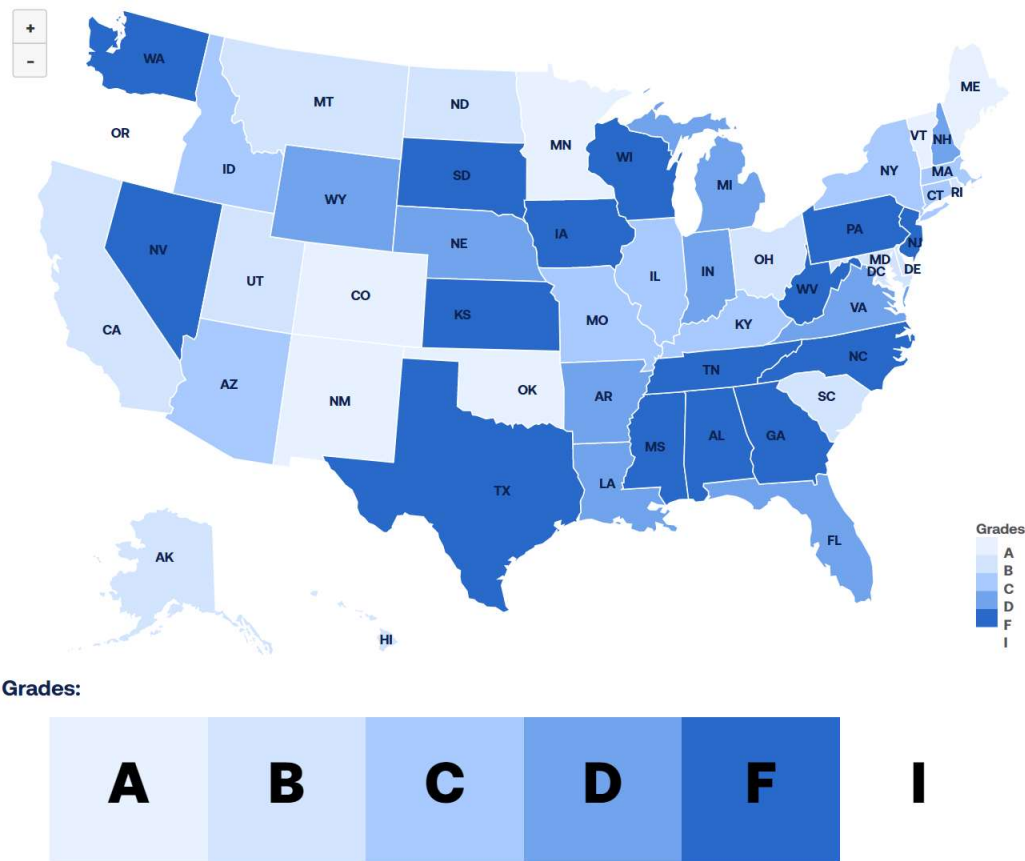
# Georgia Cancer Center at Augusta University

- **Who we are:**
  - Only state cancer center in Georgia
- **Our mission:**
  - To reduce the burden of cancer in the State of Georgia and across the globe through superior care, innovation, and education.
- **Our path:**
  - Achieve scientific excellence
  - Become destination center for cancer care excellence
  - Meet the unique needs of our community
- **Our goal:**
  - Achieve NCI designation

# The Pillars of an Academic Cancer Center



# American Lung Association State of Tobacco Control Access to Smoking Cessation 2022



Overall Grade	<b>F</b>
State Medicaid Program:	
Medications:	Some medications are covered
Counseling:	Some counseling is covered
Barriers to Coverage:	Some barriers exist to access care
Medicaid Expansion:	No
State Employee Health Plan(s):	
Medications:	All 7 medications are covered
Counseling:	Some counseling is covered
Barriers to Coverage:	Some barriers exist to access care
State Quitline:	
Investment per Smoker:	\$0.62; the median investment per smoker is \$2.41
Other Cessation Provisions:	
Private Insurance Mandate:	No provision
Tobacco Surcharge:	State has a tobacco surcharge for Medicaid enrollees

<https://www.lung.org/research/sotc/state-grades/state-rankings/access-to-cessation-services>

# Smoking Cessation Program at GCC

## Participant and Quit Rates

Year	# Attendees
2020	92
2021	342
2022	345
2023	293
2024	104
<b>Total</b>	<b>1176</b>

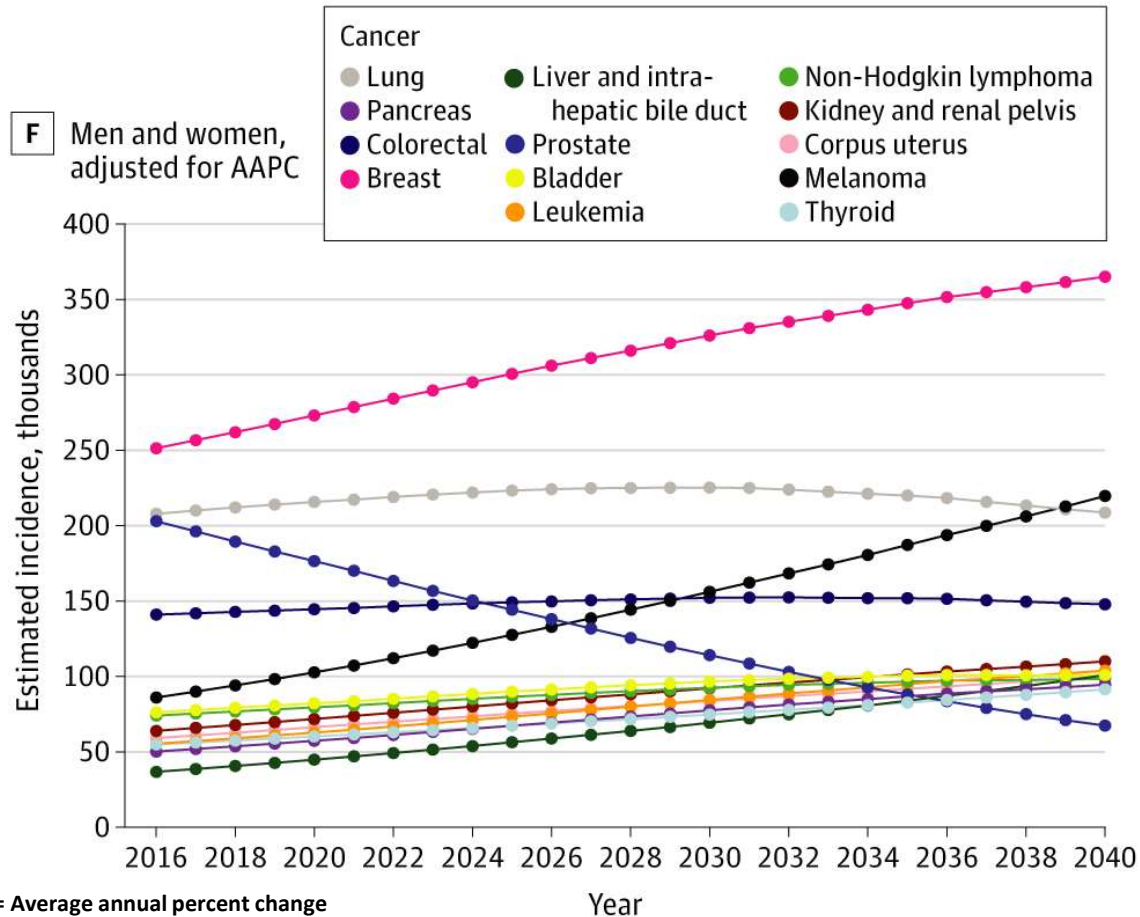
### Freedom From Smoking

(8) sessions

#### Tobacco use:

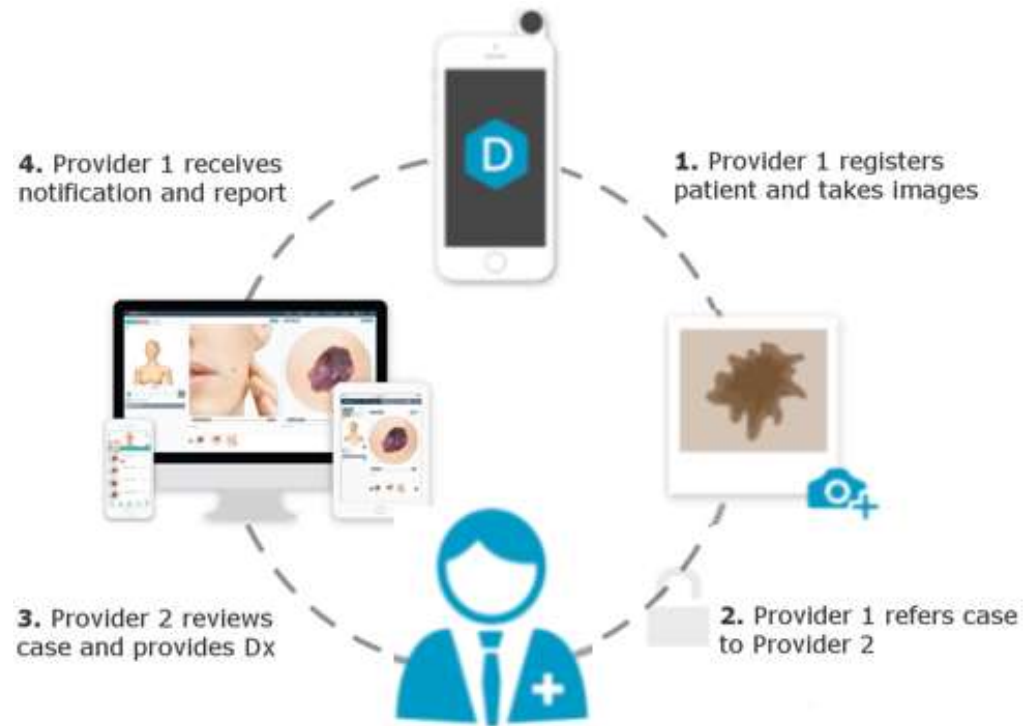
- **Quit: 51.61%**
- **Decrease: 45.16%**
- **No change: 3.23%**

# Cancer Projections - 2040



- **219,000 cases projected in 2040**
- **2<sup>nd</sup> highest overall**
- **1<sup>st</sup> in men**
- **4<sup>rd</sup> in women**

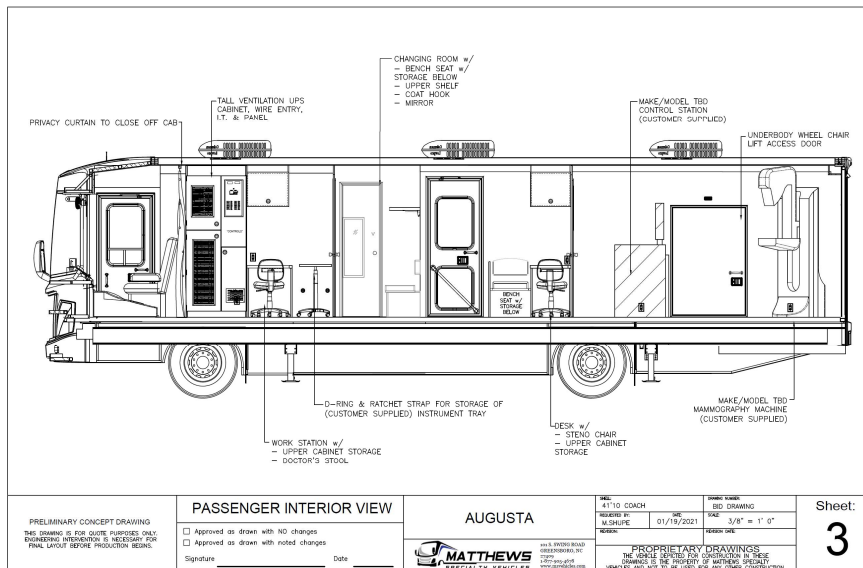
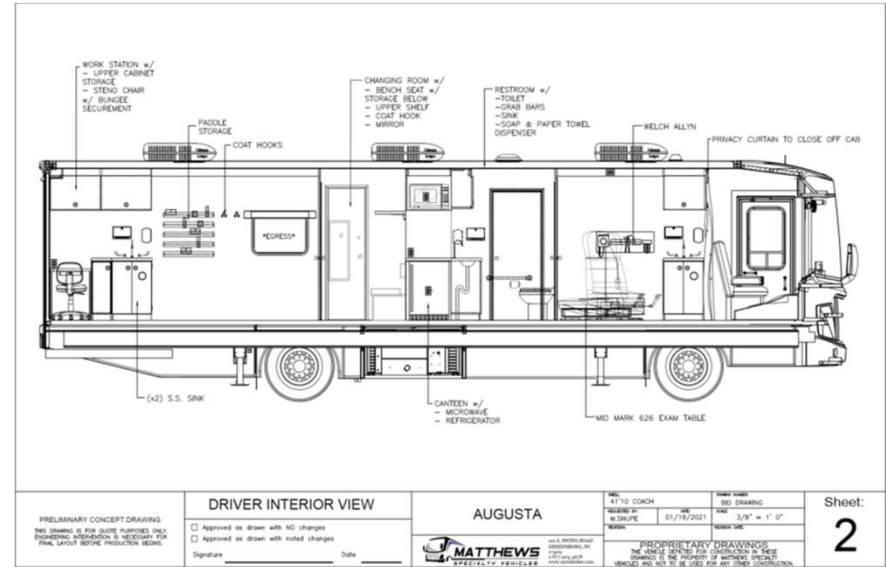
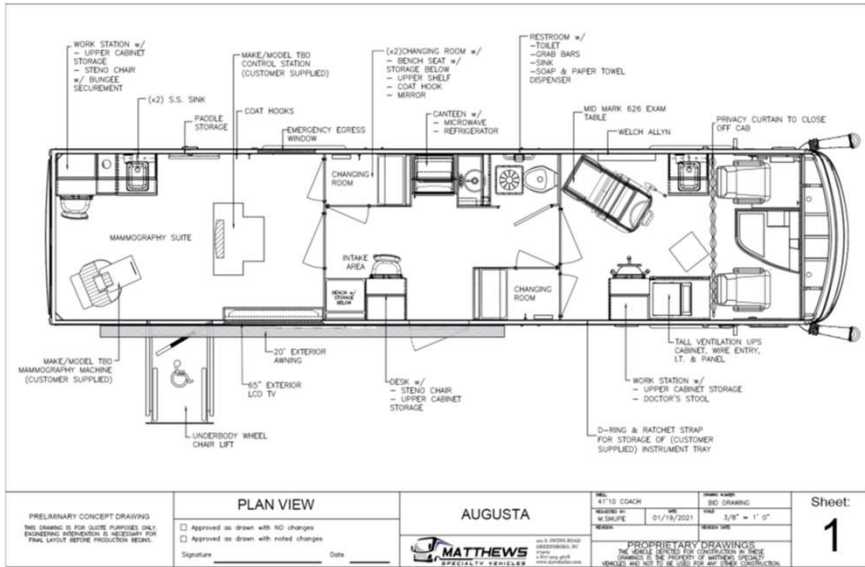
# Teledermatology in Rural Georgia – How does it work?



- **Plans:**

- Extend to additional sites after grant concluded
- Expand skin cancer prevention





- RAD-Aid Grant
- Cervical and breast mobile screening by the Georgia Cancer Center
- Screening access to uninsured

# TeleECHO Cancer Screening Projects in South Georgia

- ❑ TCSP is part of the Georgia Colorectal Cancer Control Program (GCRCCP) to implement evidence-based interventions to increase CRC screening rates.

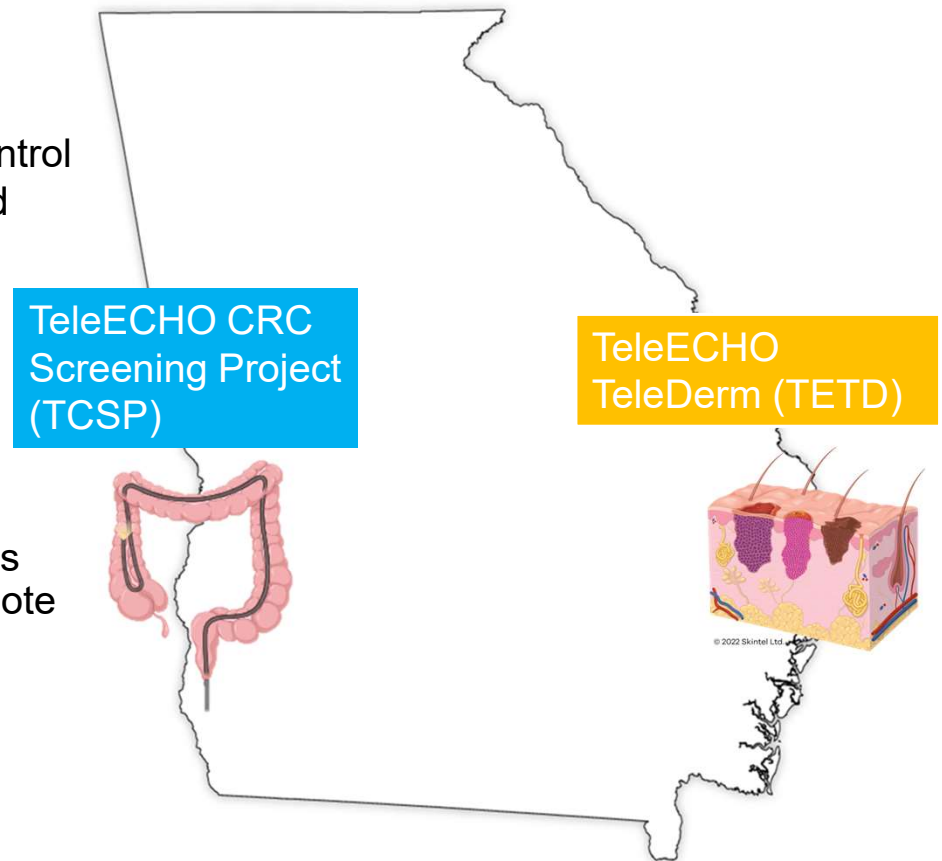


Funded by the Centers for Disease Control and Prevention (CDC)

- ❑ TETD Project is part of the Georgia Cancer Center's Teledermatology in Rural Georgia Program to promote skin cancer screening using portable dermoscopy.



Funded by the U.S. Department of Agriculture (USDA)



# SRE Program at the GCC

## R25 GOAL:

Create a pipeline of students from diverse backgrounds who are prepared for college and careers in biomedical research.

Especially encouraged to apply:

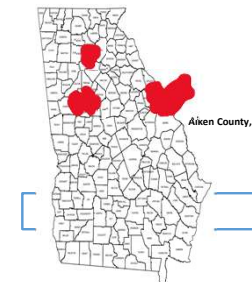
- Underrepresented minority (URM) students
- Female students
- Students with disabilities
- Students from socioeconomically disadvantaged backgrounds.

In addition to hands-on basic, computational, or population health science experience, SRE programming includes lunch-n-learns, tours of Cores and other facilities on campus, and cancer-related seminars and lectures



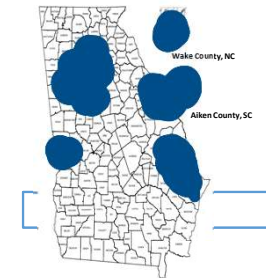
2023 SRE students saying, "I am a scientist!"

**2023**



**Applicants: 16**  
**Reach: 6 counties**

**2024**



**Applicants: 78**  
**Reach: 13 counties**  
**3 in rural regions**

# Clinical Trials at GCC

- 149 clinical trials activated since 2019
- Trials in all stages and all cancer types
- 722 patients enrolled in clinical trials since 2019
- 49% enrollment of minorities in clinical trials )Minority NCORP – PI: Dr. Ghamande)
  - National average 5%
- Tissue banking
- Behavioral and population science studies

# World-Class Recruitments

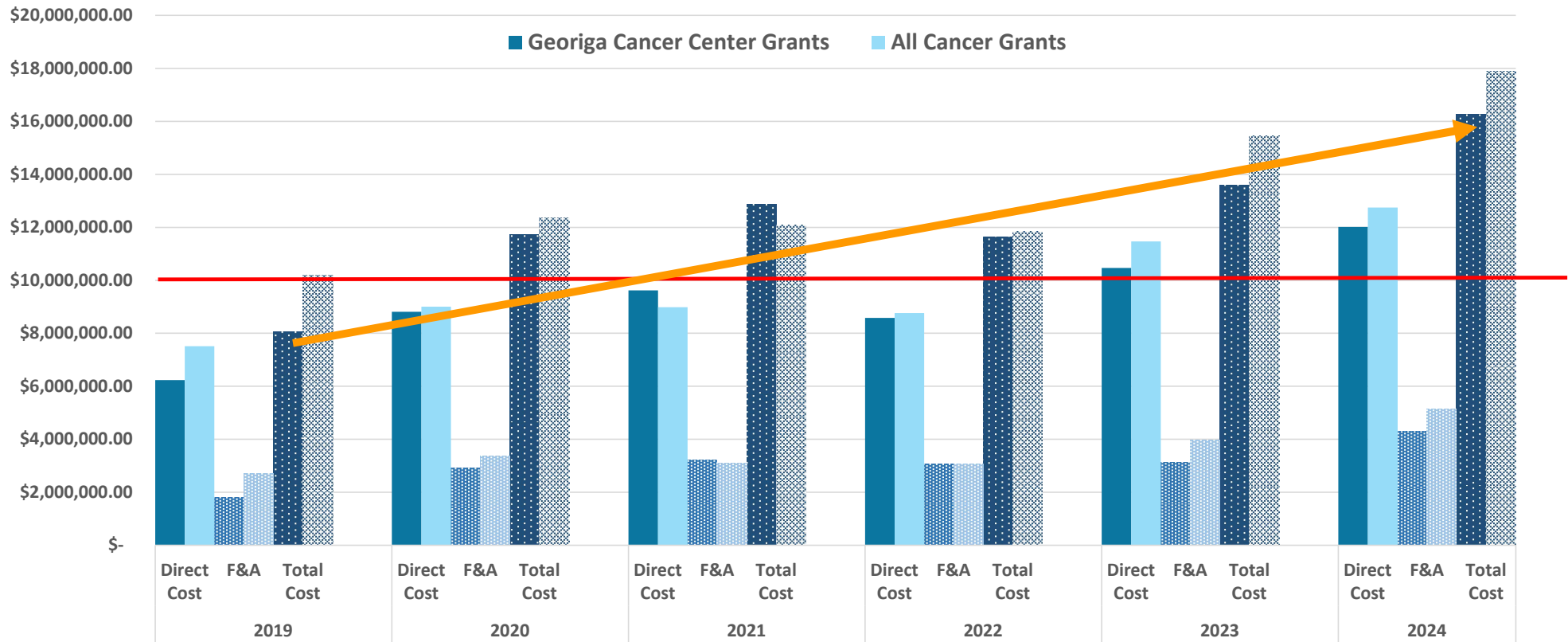
- **Lynn Hedrick PhD**, Director Cancer Immunology Program, Co-Director MCG Immunology Institute (Perfect score P01 Grant; **H-index 54**)
- **Klaus Ley PhD**, Co-Director MCG Immunology Institute (**H-index 147**)
- **Kevin Coombes PhD**, Director Bioinformatics Core (Forensics of unreproducible data; **H-index 62**)
- **Balveen Kaur PhD**, Associate Director Basic Science (world leader in oncolytic virus research; **H-index 49**)
- **John Henson MD**, Neuro-oncology & Genetic Counseling (former director MGH Brain Tumor Center, Boston, and Chief of Oncology for Piedmont Healthcare; **H-index 36**)
- **Egidio Del Fabro MD**, Chair Palliative Care (Endowed Chair Palliative Care, Virginia Commonwealth University Massey Cancer Center; **H-index 28**)
- **Ravi Kolhe MD**, Director Center of Cancer Genetics (COVID-19 test; **H-index 24**)
- **Jorge Cortes MD**, Director, Georgia Cancer Center (**H-index 188**)
- **Nicholas Gascoigne PhD**, Co-leader Immunology Program (**H-index 41**)

H-index: 20 = good, 40 = outstanding, 60 = truly exceptional (Nobel prize winners last 10 years: 24-136)

# Research Programs

- **Cancer Immunology, inflammation and Tolerance** – *Leader: Lynn Hedrick*
- **Molecular oncology and biomarkers** – *Leader: Nahid Mivechi*
- **Experimental Therapeutics** – *Under Development*
- **Molecular Epidemiology & Population Health** – *Leader: Recruiting*
- **Community Outreach and Engagement** – *Leader: Recruiting*
- **Sickle Cell Disease** – *Leaders: Betty Pace & Abdullah Kutlar*

# Cancer Grants – 2019 to 2024



• 102% increase GCC grants since 2019

— NCI Designation Threshold

P  
A  
C  
E  
L  
I  
N  
E

# Save the Date

PaceDay Weekend 2024

October 12-13

---

Benefiting



GEORGIA  
CANCER CENTER



# *New This Year*

**3 ROAD ROUTES**

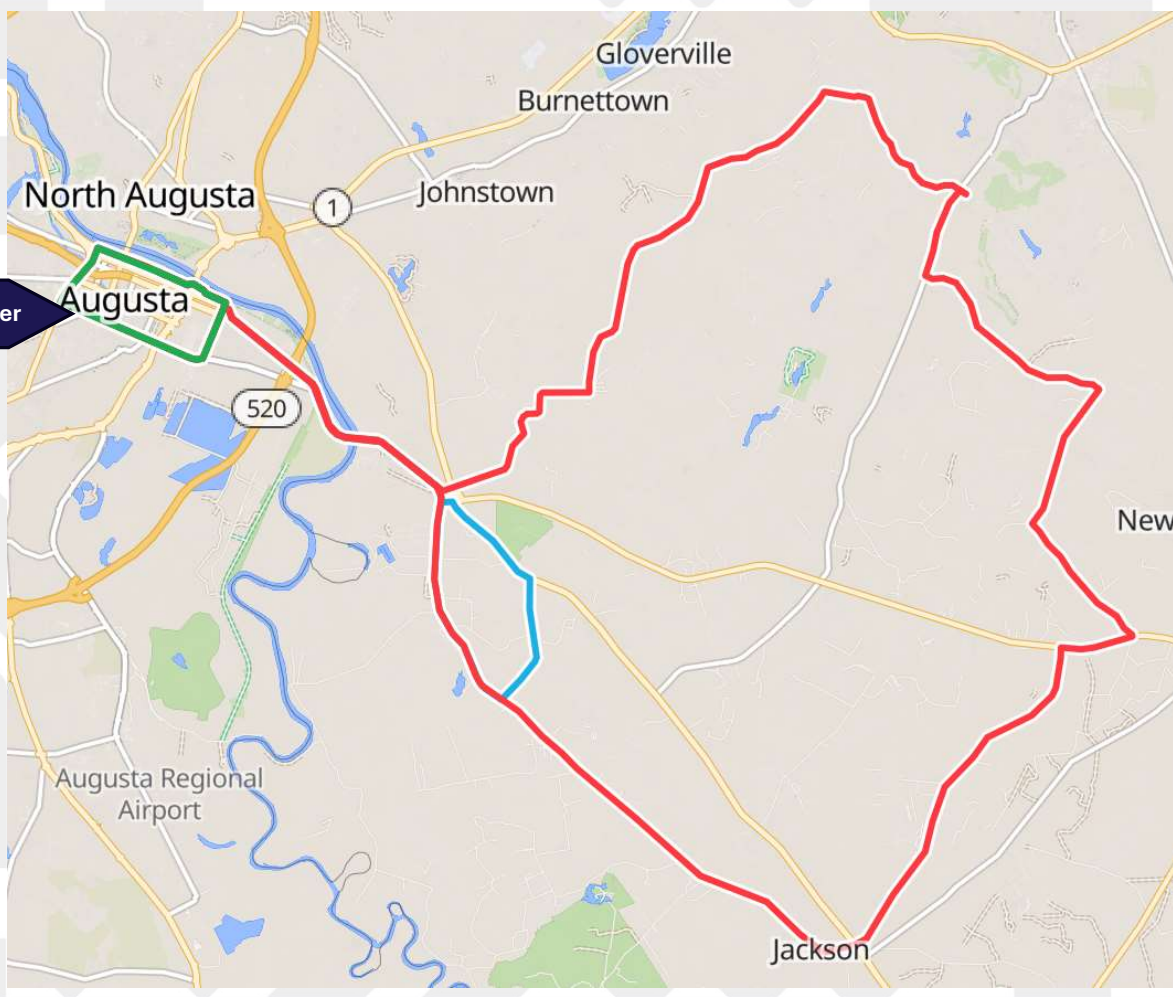
**CYCLEBAR SPIN ZONE**

**PACESETTER SIP & CELEBRATE**

**VOLUNTEER FUNDRAISING PAGES**



Georgia Cancer Center



**REGISTRATION | RIDE OR BE A  
NOW OPEN! | PACELINE PAL!**



**JOIN TEAM GCC BY SCANNING THE QR CODE!**



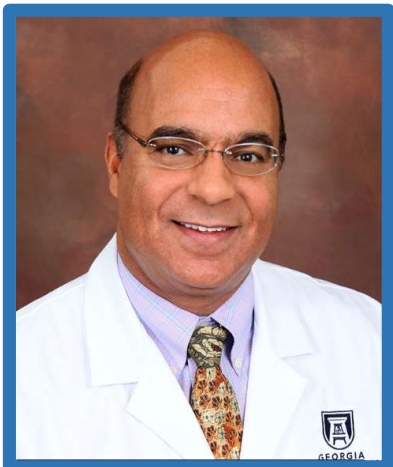
# Paceline Awardee 2022

## Basic Science Research

Targeting UNC45 to activate anti-tumor immunity against TNBC.

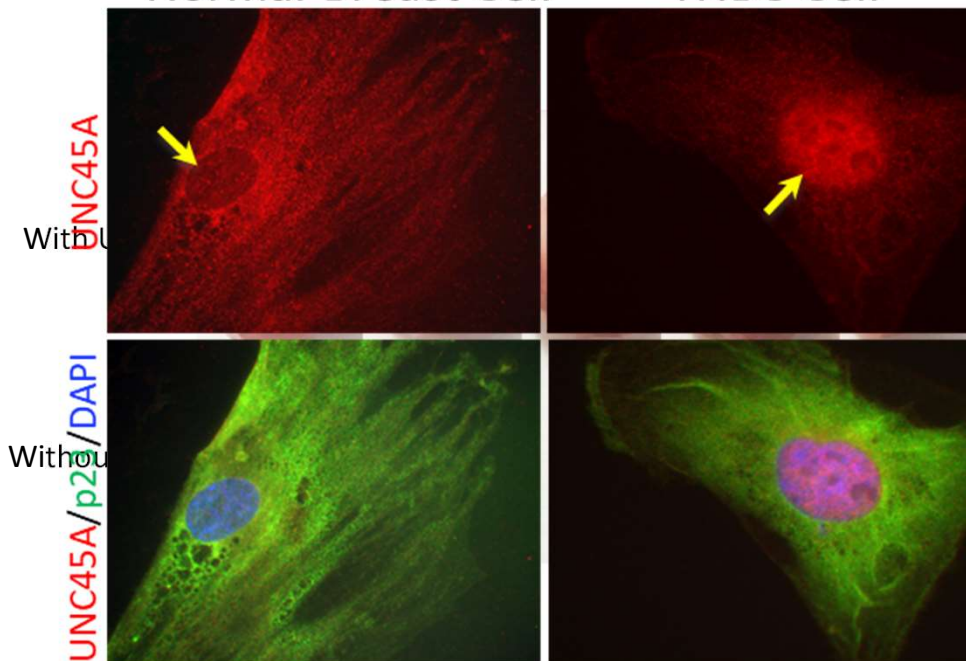
Normal Breast Cell

TNBC Cell



**Dr. Ahmed Chadli**

Associate Professor  
Biochemistry and  
Molecular Biology



UNC45 is important for TNBC cells  
Changes localization

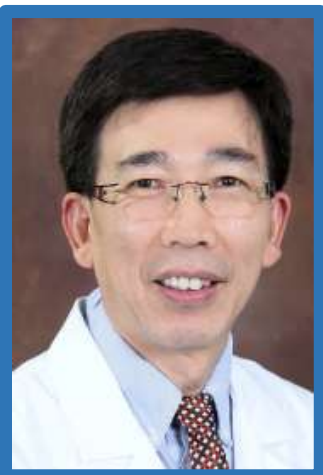
### **Challenge:**

Will loss of UNC45 destroy TNBC.

Innovation: Effect of targeting UNC45  
opens up new doors to target patients.

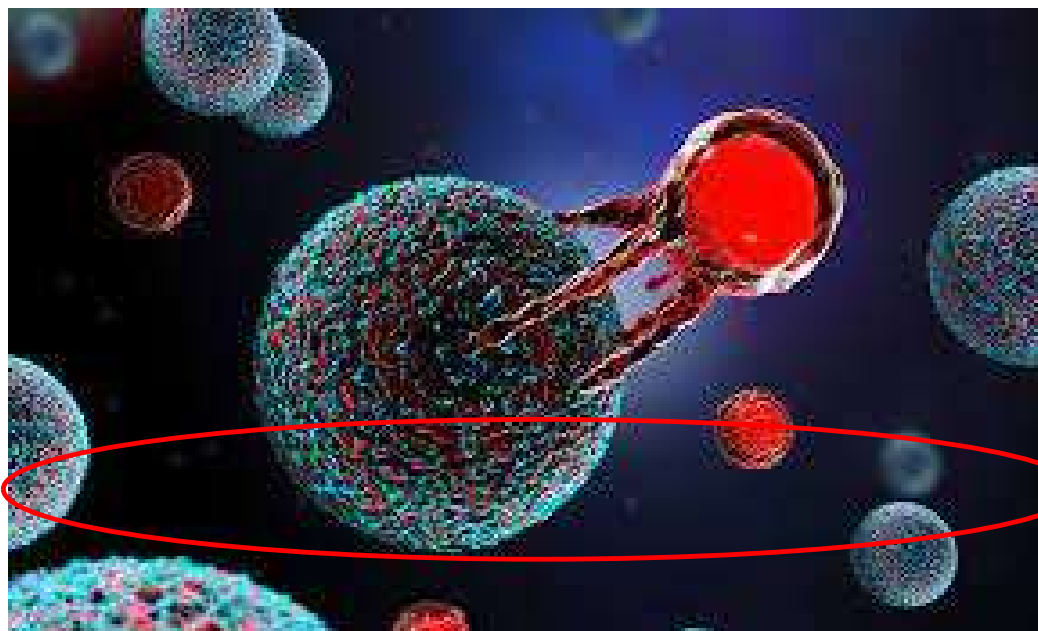
# Paceline Awardee 2022

P  
A  
C  
E  
L  
I  
N  
E



## Multi PI Research

Armor CAR-Ts to improve tumor infiltration and antitumor effects



### Dr. Yukai He

Professor,  
Department, Medicine  
Department, Biochemistry And  
Molecular Biology



### Dr. Siva Panda

Associate Professor,  
College of Science and Mathematics  
Department of Chemistry and  
Physics

**CAR T cells → Kiss of Death → Kill Tumor cells**

**Challenge:** solid tumor infiltration, and exhaustion

**Innovation:** Using Chemistry to improve penetration, and biology to improve efficacy

# Developmental Funds - Paceline

Year	Total Raised
2019	\$201,320
2020	\$126,003
2021	\$330,069
2022	\$400,000
2023	\$364,162

ROI						
Yrs <sup>a</sup>	Awardees	Awardees Departed <sup>b</sup>	Publications	Abstracts	Grants	Others <sup>c</sup>
4	20	3	10 published 5 submitted/ under review 7 in preparation	12	25 submitted <b>3 awarded</b> <b>•\$2.3M - 5yr</b> <b>•\$2.8M - 5yr</b> <b>•\$250K - 2yr</b> 8 in preparation	22
<sup>a</sup> 2019-2022 <sup>b</sup> (data not included) <sup>c</sup> Presentations, Honors, Trainee or Collaborative Opportunities						

## **A few notable clinical programs (not all inclusive)**

- **Neuro-oncology** – Dr. John Henson
- **SCT & Cellular therapy (CART)** – Dr. Vamsi Kota, Dr. Nick Gascoigne
- **Genetic counseling** – Drs. John Henson & Faizal Asumda
- **Palliative Care** – Dr. Egidio Del Fabbro
- **Cardio-oncology** – Dr. Avirup Guha
- **Lymphedema program** – Hari Kashiap
- **Psycho-oncology** – Drs. Laura Bigham & Tracy Casanova
- **Survivorship** - Recruiting

# America's Top Doctors for Cancer®



Sharad Ghamande, MD  
Associate Director, Clinical Research



Anand P. Jillella, MD  
Associate Director, Clinical Operations



David J. Terris, MD  
Regents Professor, H&N Surgery



Martha K. Terris, MD  
Witherington Distinguished Chair in Urology



John Henson, MD  
Professor of Neurology



Jorge E. Cortes, MD  
Director of the Georgia Cancer Center

# Updated Radiation Therapy Center



- **State support:**
  - \$10M for addition of new wing and equipment to provide anesthesia capabilities
  - \$5M for two linear accelerators



# Unite in the Fight

All the money collected and raised through Unite in the Fight support projects created to improve and/or enhance the experiences our patients have when they come to the Georgia Cancer Center for treatment and care.

Examples of Past Recipients of Unite in the Fight Against Cancer Awards

- Integrate mental health services in Breast Cancer treatment plan
- Pediatric patient Art ceiling tile program
- Remote Temperature Monitoring - Early Diagnosis and Intervention in Chemotherapy
- Ultrasound machine to improve vascular access for oncology patients
- Cranial Hair Prosthesis for Chemotherapy Induced Alopecia
- Wig support through the Image Boutique for patients with chemotherapy-induced hair loss
- Breast Cancer Prosthetic Devices
- Whole-Person Healing Initiative-positive spaces for patients-art, garden, meditation
- Improving mental health care for patients living with gynecological cancers

**Unite in the Fight 2025: May 3<sup>rd</sup>, 2025 – Stay tuned for announcements and please join!**

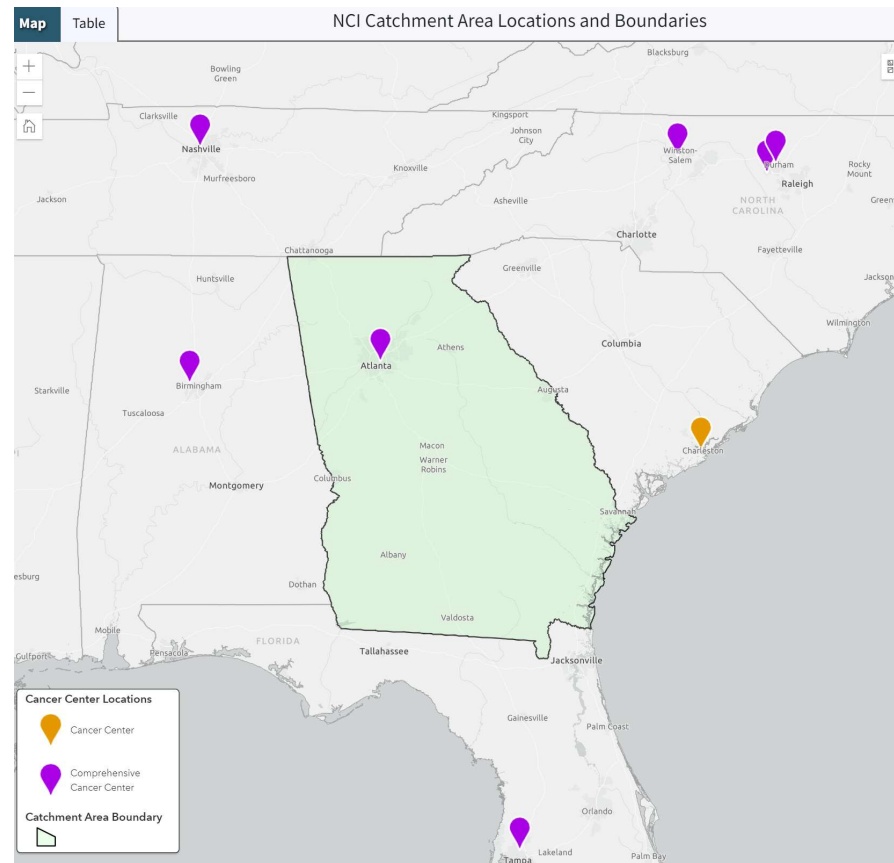
# What is NCI Designation?

- **The objectives of the NCI Cancer Centers Program are to foster highly interactive cancer research through support of the following:**
  - Formal, **interactive scientific Research Programs** comprised of investigators with common scientific interests and goals, yielding competitively funded research grants and contracts and productive collaborations;
  - **Centralized Shared Resources** that provide access to technologies, services, and scientific consultation that enhance scientific interaction and productivity;
  - **Strategic planning** and evaluation that further the research agenda of the Center;
  - **Developmental Funding** that allows the Center to pursue newly identified priorities, strengthen weaker scientific areas, and explore new collaborations;
  - Activities that **engage the populations** within the catchment area in the conducted research and other Center activities;
  - Efforts to coordinate and enhance existing cancer **research education, training, and career development** activities;
  - **Centralized Cancer Center Administration** for resources and services, fiscal management and other supportive activities, and
  - Centralized **scientific oversight of cancer clinical trials.**

## NCI-Designated Cancer Centers by State – Top 10 Most Populous States

State	Population	NCI-Designated Cancer Centers
California	39,613,493	10
Texas	29,730,311	4
Florida	21,944,577	3
New York	19,299,981	7
Pennsylvania	12,804,123	5
Illinois	12,569,321	2
Ohio	11,714,618	2
<b>Georgia</b>	<b>10,830,007</b>	<b>1</b>
North Carolina	10,701,022	3
Michigan	9,992,427	2

# NCI-Designated Cancer Center Catchment Areas





# Georgia's Cancer Center

# Questions?

[jorge.cortes@augusta.edu](mailto:jorge.cortes@augusta.edu)

706-721-0570



**GEORGIA  
CANCER CENTER**  
AUGUSTA UNIVERSITY

**Rotary**



Rotary Club of Augusta



## **GG 2455930 Toilets for Adolescent Girls of Junior College in India**

- The project helped in providing hygiene toilet facilities for adolescent girls of residential Junior college along with training on good hygiene practices.
- These girls stay at the hostel facility within the college campus. The toilet block of the hostel has 30 toilets, 24 bathrooms and 10 wash stations. This block was in dire unusable conditions and needed complete renovation.



Rtn. Stephanie A. Urechick  
RI President

Rotary 



## ROTARY CLUB OF GUNTUR

Rotary International District - 3150

With the support of

**ROTARY CLUB OF AUGUSTA**, RI District 6920

And

**THE ROTARY FOUNDATION**

*Inauguration of*

**Toilets and Urinary Blocks**

(Under Global Grant No. 2459570)

**Dedicated to:**

**JMJ Junior College for Girls, Nallapadu, Guntur**  
on Monday the 09<sup>th</sup> September 2024 @ 10.00 am

**Chief Guests:**

**Rtn. K. Sharath Choudary**

District Governor – RI Dist 3150

**Rtn. Dr. SV Ram Prasad**

District Governor Elect 2025–26, RI Dist 3150

**PDG Talla Raja Sekhar Reddy**

Past District Governor 2022–23, RI Dist 3150

**In the Presence of:**

**Rtn. K. Prabhakar** DRFC – RI Dist 3150

**PDG Dr. Ravi Vadlamani** – RI Dist 3150

**Rtn. M. Harihara Prasad** District Chair, Strategic Plan

**Project Contacts:**

**Rtn. Subba Rao Muppala** RC Guntur

**Rtn. Surendra Gupta** RC Augusta

**Rtn. William Keogh** RC Augusta

**Rtn. Adarsh Gulati** RC Augusta

President

**Rtn. K.V. Bhaskar Rao** 2023–24

**Rtn. Gali Subba Rao** 2024–25

Rotary Club of Guntur

Secretary

**Rtn. Cherukuri Srinivasa Rao** 2023–24

**Rtn. Dr. Ponduri Siva Prasad** 2024–25

Rotary Club of Guntur

THE MAGIC  
OF ROTARY

**Rotary**



Rotary Club of Augusta



**THE MAGIC  
OF ROTARY**

# GG 2455930 Toilets for Adolescent Girls of Junior College in India



Rotary

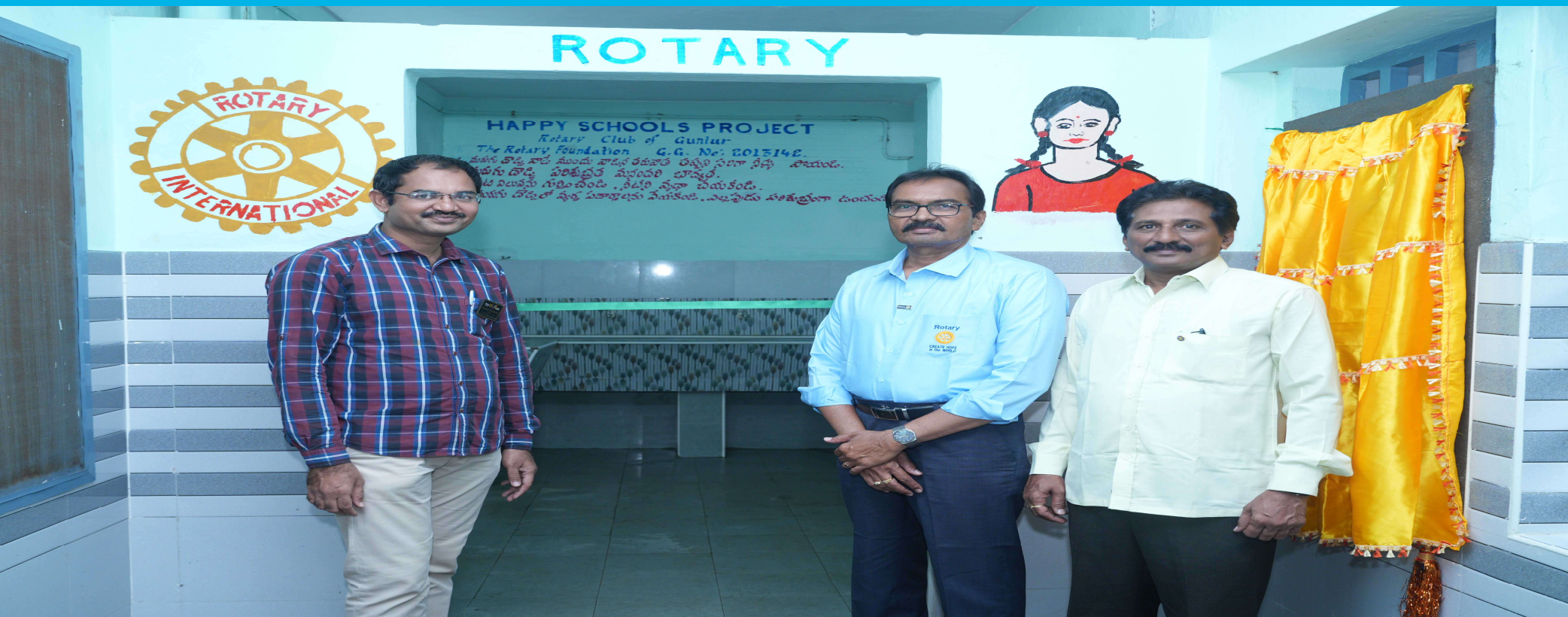


Rotary Club of Augusta



THE MAGIC OF ROTARY

# GG 2455930 Toilets for Adolescent Girls of Junior College in India



**Rotary**



Rotary Club of Augusta



**THE MAGIC  
OF ROTARY**

# GG 2455930 Toilets for Adolescent Girls of Junior College in India



**Rotary**



Rotary Club of Augusta



## History Of Global Projects by Our Club

<u>YEAR</u>	<u>NUMBER(S) PER YEAR</u>
2014-2020	1
2021	3
2022	1
2023	2
2024	2



## **UPCOMING MEETINGS:**

- **New Bell Auditorium and James Brown Arena update by Katie Berube on September 30, 2024**
- **Good News Newspaper update by Charmaine Brackett on September 23, 2024**
- **ChatGPT & Generative AI by Glenn Fink on October 7, 2024**



**THE MAGIC**  
OF ROTARY

**Rotary**  
Rotary Club of Augusta



**2024 College Pick'em**

**Stacy Tallent**

---

**IMPORTANT  
ANNOUNCEMENT**



**WORLD  
POLIO DAY**  
24 OCTOBER

Rotary  | **END  
POLIO  
NOW**

## **New Membership Orientation**

- Tuesday, September 24, 2024, at 4:30 PM at Enterprise Mill.
- Session takes about one hour fifteen minutes.



## Speech Contest Committee Meeting

- Monday, September 23, 2024, after the Club Meeting.



## **Hull Fund Committee Meeting**

- Monday, September 30, 2024, after the Club Meeting.





## THE FOUR-WAY TEST

*Of the things we think, say or do:*

*first*

Is it the **TRUTH**?

*second*

Is it **FAIR** to all concerned?

*third*

Will it build **GOODWILL** and  
**BETTER FRIENDSHIPS**?

*fourth*

Will it be **BENEFICIAL** to  
all concerned?